



CardLink™ by Kaba  
The integral cable-free access control concept



# CardLink

No Strings Attached!

### **3 What is CardLink?**

CardLink is the innovative cable-free access control concept

### **4 How does it work?**

CardLink works by loading and transporting authorisation data on a smart key or a badge

### **5 CardLink in your industry**

Airports, education, finance & insurance, government, healthcare, manufacturing, film & recording studios, offices & trade facilities, utilities

### **7 CardLink helps you do a better job**

Security managers, facility managers, IT managers, HR managers, architects

### **10 Why you should install CardLink**

Because it gives you more access control flexibility, convenience and tailor-made security, without the cost and hassle of cabling

### **11 Want to know more?**

Contact us for more information

# What is CardLink?

CardLink is the innovative cable-free access control concept. It is very secure, easy to install, operate and maintain. Its flexibility is unmatched regardless of you being the installer, the operator, the user or the one with the wallet! CardLink bridges the gap between stand-alone and online systems, enabling you to expand your system at a desired pace. It can run on your existing IT platform and works with most existing door furniture. All this means customised security, flexibility, convenience and efficiency at low investment.

In other words, with CardLink you can climb to fascinating heights where you can push the boundaries of freedom.  
- **No Strings Attached!**



# How does it work?

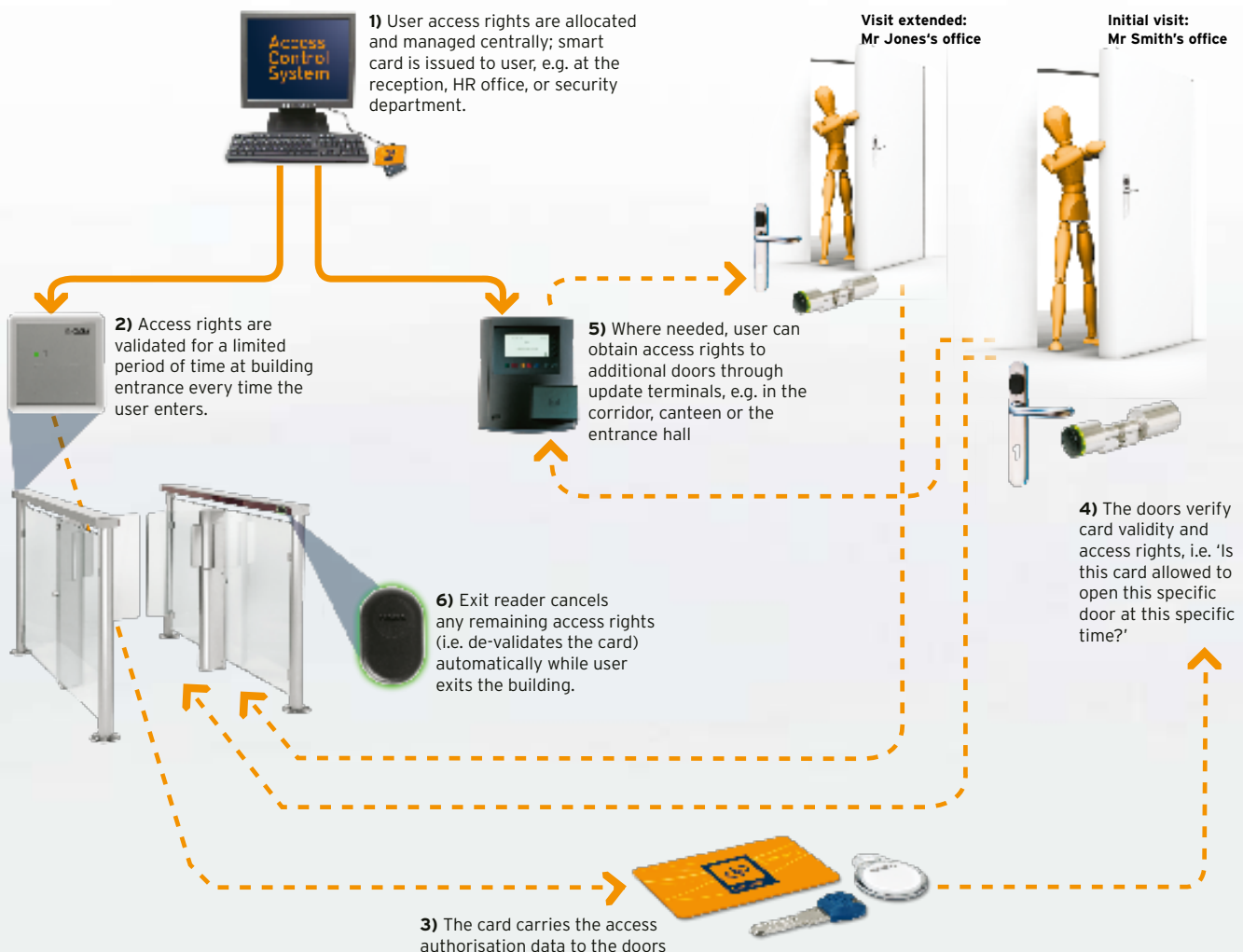
CardLink works by loading and transporting authorisation data on a badge or smart key. The badge is validated upon entering and de-validated while exiting the premises. Access rights can be added or changed at various update points throughout the premises. Since access is issued for a pre-set time, and de-validated upon exit, there is no security

risk if badges are lost or not returned by visitors. Also, there is no need for running around updating or revoking access rights manually in each door. You can issue one single card for access control, time-and-attendance, enterprise data collection and cashless payment. Convenience, efficiency and security at every door.

**No Strings Attached!**

## Did you know?

CardLink not only delivers endless possibilities and options, but is also easy to install, operate and use; all at a low investment level.



**Note:** No need to cancel access rights of a lost/unreturned card manually at each door, because the authorisation is cancelled automatically after the pre-set time has expired or when the user exits the building.

# CardLink in your industry



## Airports

Airports have highly complex access control requirements. They have a very high demand for security as well as convenience. Large numbers of employees and sub contractors pass through. Passenger flow has different requirements where the bulk of people enter few doors and need to be controlled by ticket, identity or biometric attributes. Access points in these large and spread-out facilities need to be controlled 24 hours a day. Operation and maintenance need to run smooth and deliver high security levels. Herein lays the problem - easy to use for operators and employees yet difficult for those who try to access unauthorised. CardLink leaves none of these issues up in the air.

## Education

As a university, school or education establishment, you typically have multiple facilities, possibly over several locations. This would mean you have a large number of doors used by groups of students, staff and visitors. Security and organisation need to be ensured in a convenient way. You need to control access to teachers' offices, laboratories, library, the gym, the swimming pool and the campus without hampering the very dynamic needs of the facility, and at reasonable costs. As students come and go, keys need to be replaced and/or access rights must be changed. CardLink offers a number of features that are tailor-made for the situation at hand.

## Finance & insurance

If you work for a financial institution, then you typically use an online access control system for high-security rooms. For less sensitive rooms, you probably use stand-alone locks. Ideally you would extend your online system to cover some of those "less sensitive" rooms. Stand-alone locks may be sufficient for canteens and toilettes but not for offices and meeting rooms. You want to ensure that no-one gains access above their security profile. But you wouldn't like your facility to feel like a prison. You want your premises to be representative and inviting to employees and visitors. The devil is, extending your online system means cabling. This may be inconvenient and too expensive.

The good news is, with CardLink you can extend your online access control system, without cables! It's a very smart investment - now isn't that what it is all about?



### Government

Government facilities are often used by a large number of people as they welcome many employees, contractors and visitors on a daily basis. The demand for security is high yet work needs to run smoothly and conveniently. Lost or not-returned keys are not only a security risk but can also be very costly. New keys have to be ordered or sometimes even locks have to be replaced. Another issue is that with pushbutton locks you can't control who knows the codes. CardLink offers a number of features to conquer these problems.



### Healthcare

Hospitals, clinics, retirement homes and serviced apartments represent an environment with a large number of doors and a need for control of security and safety. There is a need to guarantee health and safety of the patients or residents, and security of equipment. There are a large number of staff changing shifts throughout the day and night. Patients, visitors, suppliers and external service personnel need access through different doors. And access rights change all the time. This means a lot of keys and a very complex access management concept. For these kinds of conditions, CardLink is the right medicine.



### Manufacturing

The manufacturing sector is typically characterised by high number of people using a large number of doors and equipment. Some companies have as many visitors as employees, but with different access rights. The use of access points is dynamic. Personnel are replaced each working season; access rights are updated due to relatively high staff turnover; keys get lost by employees, misused by subcontractors or not returned by visitors. In a worst-case scenario, sensitive equipment is operated by unauthorised individuals. Or uncontrolled visitor movement leads to security risk to data, potential damage to equipment or risk to health and safety. CardLink offers a solution to all these situations.



### **Film & recording studios**

Film and recording studios reflect the working environment of the 21st century very well. Fast moving, flexible, time pressured production with a lot of new people coming and going throughout the day - and night! This is an environment where flexibility and convenience is a must, without jeopardising security. Access rights need to be changed many times a day, as groups of people often work there for short-term projects and then move on. Quite often, managing a studio also means controlling a number of different buildings. CardLink - being the access control concept for the 21st century, fits nicely in this environment perfectly.



### **Office & trade facilities**

Office and trade facilities need not only security, but they also need to be convenient and inviting to employees, visitors and customers. Depending on the sector, there can be a very high number of visitors. Another issue is constant movement of personnel and staff turnover. New employees and new responsibilities mean frequent update and withdrawal of access rights. This is often a very time-consuming and costly task. CardLink offers a very secure yet flexible access control opportunity, perfectly fitted for the needs and demands of a modern office or trade facility.



### **Utilities**

Your sector has very complex security and access control needs. A high number of doors in remote sites spread out over long distances have to be protected as well as accessible 24 hours a day. Repair and maintenance visits are irregular and often carried out by different personnel from one time to another. That means large numbers of access media and constantly changing access rights. Personnel changes and lost keys equal big security problems and high costs. In a worst-case scenario, unauthorised individuals could gain access to sensitive equipment, causing a threat to public safety. With CardLink you can prevent this efficiently and effectively.

# CardLink helps you do a better job

## Security Manager

As a security manager, you are responsible for a high number of doors being used by many individuals. You may also have high-security areas with strict access rights. It is hard to get an overview of everybody's security profiles.

To you, 'more doors under control' means 'higher security'. You prefer to avoid mechanical systems as key loss can cause a security threat. But an intelligent system to cover all your needs is normally expensive and complex. It is also difficult to "sell" to your peers, because you are expected to manage access rights conveniently. CardLink offers a number of solutions to your needs.

## Facility Manager

As a facility manager, you are all too familiar with lost keys and all the problems that come with it. There is also a good chance that you wear out at least one pair of shoes every year, running around updating access right at different doors. It doesn't help that you're managing both an older master key system as well as a modern digital system. On a really bad day you might get complaints from co-workers that don't appreciate the construction noise as new cables are laid to expand your online access control system. These issues make it challenging for you to achieve your most important goal: effective building maintenance while keeping costs low. CardLink helps you do just that.

## Human Resources Manager

As an HR manager you take a lot of interest in people and organisations. Big parts of your job are to overview and create a safe and secure working environment that is also efficient. Sometimes even the responsibility of access rights and security clearance lay on your shoulders. It is a very time consuming task.

CardLink works with your existing HR tool, so you can grow the system at your own desired pace. You gain peace of mind, as you don't have to wait for access rights to be adjusted when badges go missing. And you have an overview of all your personnel access profiles on one screen.



### IT Manager

As an IT Manager you have no problem understanding an access control system, its technology, features and functionality. You have no trouble realising your organisations structure and the need for different authorisation levels. Your challenge is usually that the systems every now and then becomes quite chaotic, and of course to maintain a high level of information security. What you need is an access control system that integrates easily into your current IT infrastructure, allowing you optimum system monitoring. That is now possible with CardLink.

### Architect

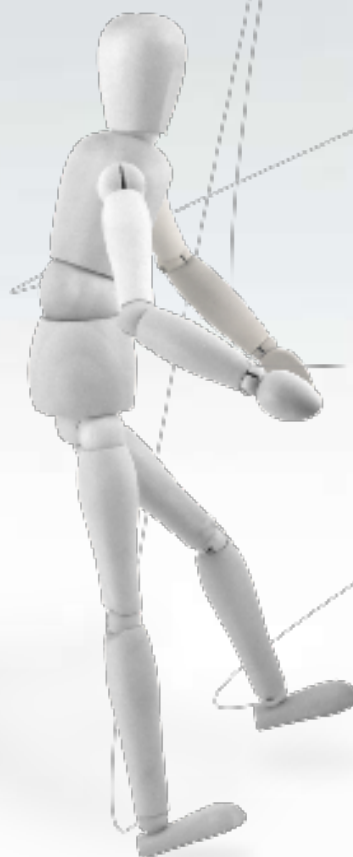
As an architect you probably like space. You like your construction designs to feel spacious and you like to have space yourself. Room to be creative when designing. At Kaba that spells out freedom and flexibility. With CardLink your design will not be tied up by miles of cable. Securing and controlling access points in a building have never been easier. And of course no cables means the flexibility to use transparent material in doors, walls etc. This translates into more space to be creative, more freedom - for you and your contractor! **No Strings Attached!**



### Did you know?

CardLink was born out of a combined technological feasibility study as well as market feedback by people like you. This is why we are so confident that it will satisfy your requirements nicely.

# Why you should have CardLink



As an IT, HR, security, facility or financial manager you are involved in the very important work to constantly overview facility security, personnel safety, production efficiency, technology maintenance, protection of information and everything else that makes your working environment safe, secure and convenient. Regardless of your industry, CardLink provides you with unlimited freedom to perform these tasks efficiently.

CardLink not only brings security to your organisation but also adds convenience and efficiency. You can extend your existing online access control system

without the use of cables. That means you gain significant extra benefits with little investment. If you don't have an online access control system, CardLink enables you to integrate all your stand-alone locking devices into one system. You can define your own security level, e.g. highly strict access control to the IT room, secure but convenient access to the conference rooms, and flexible but controlled access to the company car park.

Apart from customised security, CardLink also provides a user-friendly overview and better control over the access profiles of all staff, sub-contractors

and visitors. Additionally, it brings great flexibility, reliability and operational convenience for facility management purposes. And your staff can use just one badge for access control, time-and-attendance, enterprise data collection and cashless payment.

CardLink is easy to install and operate. And it works with most commercially available door furniture. In short, with CardLink you get improved efficiency and convenience as well as tailor-made security without the hassle and cost of cables. **Free yourself!**

# Want more freedom?

If you want to find out more about the flexibility and freedom that CardLink could offer you, please visit:

[www.kaba-cardlink.co.uk](http://www.kaba-cardlink.co.uk)



**No Strings Attached!**

## EUROPE

<b>Austria</b>	<b>Kaba GmbH</b> Ulrich-Bremi-Strasse 2 AT-3130 Herzogenburg Phone +43 2782 808 0 office@kgh.kaba.com www.kaba.at
<b>Belgium</b>	<b>Kaba Belgium NV/SA</b> Steenweg op Gierle 339 F BE-2300 Turnhout Phone +32 14 44 8044 info@kaba.be www.kaba.be
<b>Croatia</b>	<b>ECCOS inženjering d.o.o.</b> I Pile 21 HR-10000 Zagreb Phone +385 1 60 60 290 info@eccos.com.hr www.eccos.com.hr

## Italy

**Kaba srl**  
Via A. Costa 6  
IT-40013 Castel Maggiore (BO)  
Phone +39 051 417 8311  
info@kib.kaba.com  
www.kaba.it

## Luxembourg

**OMNISECURITY S.A.**  
11a, rue du Commerce  
L-3895 Foetz  
Phone +352 29 14 16-1  
postmaster@omnisecurity.lu  
www.omnisecurity.lu

## Portugal

**Escritório Lisboa**  
Av. Liberdade 110  
1269-046 Lisboa  
Phone +351 213 404 551  
info@kaba.pt  
www.kaba.pt

## Spain

**Grupo Kaba - Iberkaba S.A.**  
Maria Tubau 4  
ES-28050 Madrid  
Phone +34 902 224 111  
info@kaba.es  
www.kaba.es

## Sweden

**Kaba AB**  
Filargatan 12  
P.O. Box 353  
SE-63105 Eskilstuna  
Phone +46 1616 1500  
info@kae.kaba.com  
www.kaba.se

## Switzerland

**Kaba AG**  
Mühlebühlstrasse 23  
CH-8620 Wetzikon  
Phone +41 848 85 8687  
info@kaba.ch  
www.kaba.ch

## The Netherlands

**Kaba Nederland BV**  
Postbus 6666  
NL-6503 GD Nijmegen  
Phone +31 88 352 3333  
info@kaba.nl  
www.kaba.nl

## United Kingdom

**Kaba Ltd.**  
Lower Moor Way  
Tiverton Business Park  
GB-Tiverton, Devon EX16 6SS  
Phone +44 0870 0005625  
info@kaba.co.uk  
www.kaba.co.uk

## MIDDLE EAST

**United Arab Emirates** **Kaba FZE**  
Dubai Silicon Oasis HQ  
Office C103  
P.O Box 341038  
Dubai, UAE  
Phone +971 4 501 56 36  
kaba-middle-east@ksw.kaba.com  
www.kaba.ae

## ASIA PACIFIC

**China** **Kaba Access Technology (Suzhou) Co. Ltd.**  
Block No.28, Unit A  
Suchun Industrial Square no. 428  
Xinglong Street  
Suzhou Industrial Park  
215126 China  
Tel. +86 512 6283 6228  
eac@klh.kaba.com  
www.kaba.com

## Hong Kong

**Kaba Ltd.**  
2108 Futura Plaza  
111-113 How Ming Street  
Kwun Tong, Kowloon  
Hong Kong SAR  
Phone +852 2375 6110  
eac@klh.kaba.com  
www.kaba.hk

## India

**Sauter Race Technologies Pvt. Ltd.**  
No. 248, Thiru Vi Ka Street  
Royapettah,  
IND-Chennai - 600 014  
Phone +91-44-42218888  
chennai@sauterrace.com  
www.sauterrace.com

## Singapore

**Kaba Security Pte Ltd**  
Block 203A, Henderson Road  
#07-03, Henderson  
Industrial Park  
SG-159546 Singapore  
Phone +65 6275 1211  
enquiry\_asia@kaba.com.sg  
www.kaba.com.sg

## OTHER COUNTRIES

**International Projects** **Kaba GmbH**  
Am Bahnhof 29  
D-98529 Suhl  
Tel. +49 3681 7983 0  
projects-ips@kbs.kaba.com  
www.kaba.com