

Outside Cylinders

AZ89-4-007, AZ95-4-131, AZ96-4-001

Configuration

Housing brass chrome plated, reversible key made of nickel silver, Zinc-coated steel mounting plate

Included with the cylinder

- 3 reversible keys
- Kaba gemini S, quattro S and quattro pluS: plastic clip in Kaba blue
- Kaba penta: plastic clip in dark red
- 2 Cylinder fastening screws M5 x 65 mm
- 1 Rosette ZUST.18R.29 (for Types 95-4-131, 96-4-001)
- 1 Rosette 1007-11 (for Types 89-4-007)
- 1 Mounting plate Type BS 31 (for Type 89-4-007)

Application

Except outer locks for surface mounted locks, suitable for door thicknesses from 35 to 80 mm.

- Available systems**
- | | | |
|-----------------------------------|-------------------------------------|--------------------------------------|
| 6 Kaba penta | 7 Kaba quattro pluS | 2 Kaba gemini S |
| 4 Kaba quattro S | 5 Kaba experT ²⁾ | 9 Kaba gemini T ²⁾ |
| 8 Kaba 8 only for 89-4-007 | 3 Kaba quattro ¹⁾ | 1 Kaba gemini ¹⁾ |

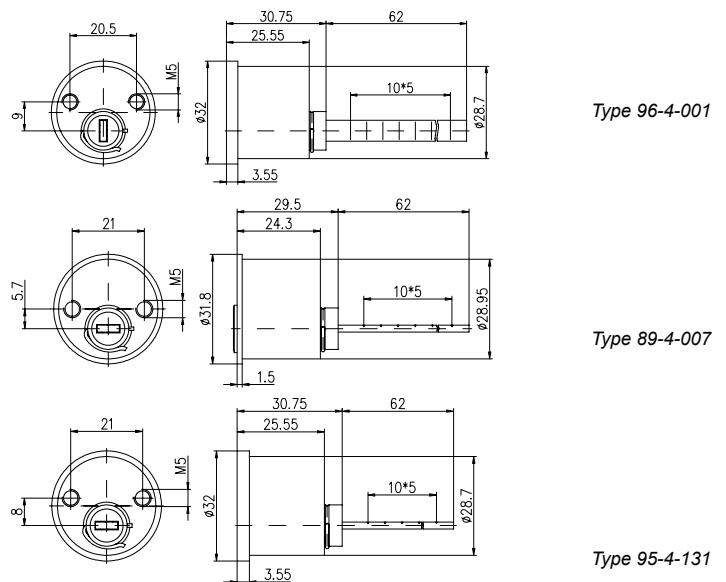


The lock cylinder is excentric

Tailpiece can be turned 90°:

1. Remove rivet
2. Turn the actuator cap 90°
3. Fasten the rivet

Tailpiece can be shortened to length required



Order Code

*.AZ89-4-007.**	suitable for Gege Surface Mounted Locks with Swiss mounting plates
*.AZ95-4-131.**	suitable for Gege Surface Mounted Locks
*.AZ96-4-001.**	suitable for EVVA types K513, K900, K910-K950

* System code number (1, 2, 3, 4, 5, 6, 7, 9)

** Surface Finish

Natural nickel	NI
Standard/natural brass	MS
Standard antique brass	MSA
Polished brass	MP
Chemically nickel-plated	NIC
Standard chrome	CR
Polished chrome	CRP
Dull chrome	CRM
Light brown	BL
Medium brown	BM
Brown, dark/black	BD
Gold plated	GO

Accessories

See page K.3

¹⁾ The systems Kaba gemini and Kaba quattro are offered for expansions only!

²⁾ Kaba experT and Kaba gemini T systems are only sold to authorized dealers.

Outside Cylinder AZ1007



Configuration

Housing brass chrome plated, reversible key made of nickel silver, if desired brass, standard at no additional charge.
Zinc-coated steel mounting plate

Included with the cylinder

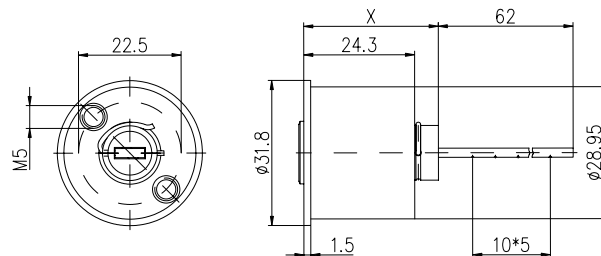
3 reversible keys
Kaba gemini S, quattro S and quattro pluS: plastic clip in Kaba blue
Kaba penta: plastic clip in dark red
2 Cylinder fastening screws M5 x 65 mm
1 Rosette 1007-11)
1 Mounting plate type BS 31

Application

Outer cylinder excentric for surface mounted locks, suitable for door thicknesses from 35 to 80 mm

Available systems

6 Kaba penta	7 Kaba quattro pluS	2 Kaba gemini S
	4 Kaba quattro S	
	5 Kaba experT ²⁾	9 Kaba gemini T ²⁾
8 Kaba 8	3 Kaba quattro ¹⁾	1 Kaba gemini ¹⁾



The lock cylinder is centric
Tailpiece can be turned 90°:
1. Remove rivet
2. Turn the actuator cap 90°
3. Fasten the rivet

Type 1007
Dimension X
= 29,5 mm
= 31,0 mm (Kaba 8)

Tailpiece can be shortened to length required

Order Code

*.AZ 1007.**

* System code (1, 2, 3, 4, 5, 6, 7, 8, 9)

** Surface Finish

Natural nickel	NI
Standard/natural brass	MS
Standard antique brass	MSA
Polished brass	MP
Chemically nickel-plated	NIC
Standard chrome	CR
Polished chrome	CRP
Dull chrome	CRM
Light brown	BL
Medium brown	BM
Brown, dark/black	BD
Gold plated	GO

Accessories

See page K.79

¹⁾ The systems Kaba gemini and Kaba quattro will only be offered for expansions only!

²⁾ Kaba experT and Kaba gemini T systems are only sold to authorized dealers.

Accessories for Outside Cylinders

Order Code

1007-11	<p>Rosette suitable for outer cylinders types 1007 and 89-4-007 Material: Brass, dull nickel-plated</p>	
ZUST.18R.29	<p>Rosette suitable for outer cylinders types 95-4-131 and 96-4-001 Material: Brass, dull nickel-plated</p>	
1007-29	<p>Rosette with sliding cover suitable for outer cylinders types 1007 and 89-4-007 Material: Brass, dull nickel-plated</p>	
<p>ZUST.18.NI ZUST.18E.MP</p>	<p>Rosette square suitable for outer cylinders types 95-4-131 and 96-4-001 chrome plated Polished brass</p>	
ROS.AZ.AK	<p>Steel rosette, round Against the pulling method, stainless steel turn disc suitable for outer cylinders types 95-4-131 and 96-4-001</p>	

¹⁾ The systems Kaba gemini and Kaba quattro are offered for expansions only!

²⁾ The systems Kaba expert and Kaba gemini T are only sold to authorized dealers.